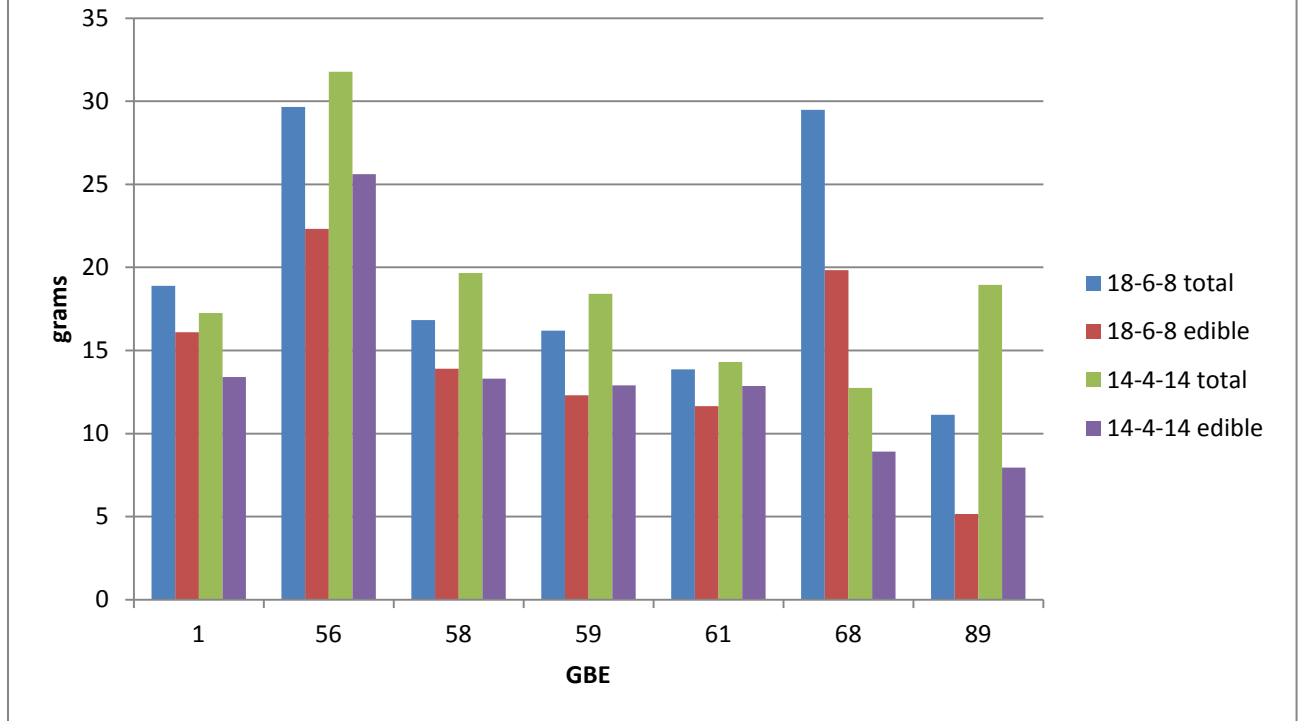


## Total and Edible Mass Trial 1



GBE 1	Red Romaine Lettuce
GBE 56	Extra Dwarf Pak Choi
GBE 58	Emperor Chinese Kale
GBE 59	Purple Magik Pak Choi
GBE 61	Garland Round Leave Shugiku
GBE 68	Large Leaf Long Ho Shugiku
GBE 89	Petite Snap-Green Peas

Fertilizer 18-6-8; 7.5 g/l

Fertilizer 14-4-14; 7.5 g/l