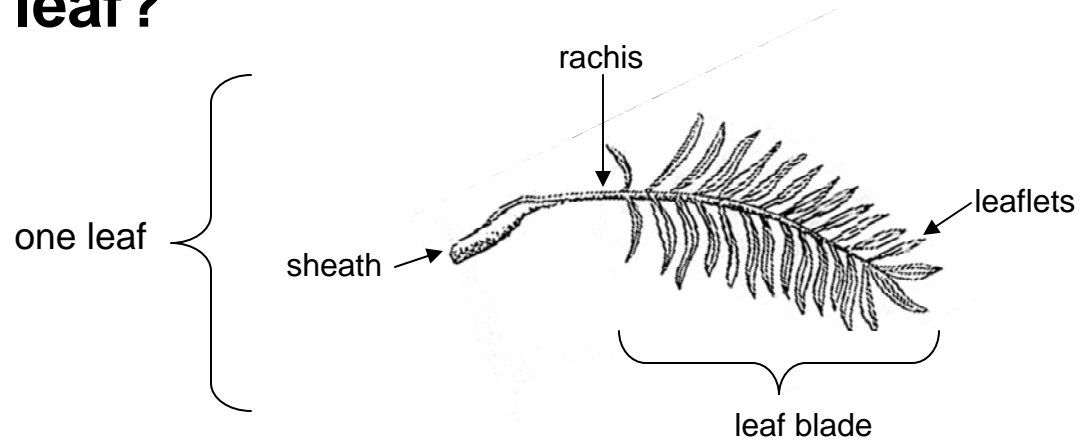


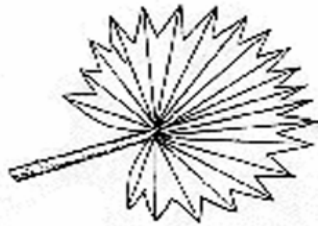
What's a palm leaf?



There are three main types of leaf shapes in palms.



Type 1: pinnate



Type 2: palmate



Type 3: twice compound

Type 1 The **pinnate leaf** is like a feather with leaflets attached to a single stalk, as in coconut.



Bactris leaf



Arenga undulata leaf



Attalea leaf – the biggest leaves in the world are found on palms

Type 2 The **palmate leaf** has leaflets arranged like the fingers of a hand, arising from one region.



Leaves of *Guahaia* (left) and *Rhapsis* (right)



Latania verschaffeltii
leaf lower side



Latania leaf upper side



Leaves of *Copernicia fallaensis* – these are big palm leaves

Type 3 The third type of palm leaf is the most complicated and is found on the common fishtail palm (*Caryota mitis*). The leaf is divided two times so that the pairs of leaflets (each shaped like a fishtail) are carried on stalks that are in turn carried by the main stalk (the rachis). The term for this condition is called **twice compound**.



Caryota mitis leaf
(from small stem)



Caryota mitis leaf
(from big stem)