

## **YOU CAN JOIN OUR EFFORTS TO SAVE PINE ROCKLANDS!**

You can participate in the *Connect to Protect Network* if you have existing pine rockland habitat on your property, wish to restore pine rockland plants in a garden near pine rocklands in Miami-Dade County, or would like to establish a native species garden in your backyard. As our funding permits, Fairchild is committed to helping interested participants in the following ways:

- 1) give presentations to your organization on the purpose of the CTPN
- 2) assist with organizing and training volunteers to help clean up your pine rockland site and plant pine rockland species
- 3) provide you with pine rockland plants grown in our nursery
- 4) advise you on how to maintain your pine rockland plants
- 5) put you in contact with other CTPN members for support in your efforts

**For information about joining the  
*Connect to Protect Network*,  
please contact:**

Scott Lewis  
Fairchild Tropical Botanic Garden  
slewis@fairchildgarden.org  
305-667-1651 X 3411

## Pine Rockland Corridor Project



***Using native plants in corridors to connect pine rockland fragments can enhance the possibility of long term survival of the plants and animals of this endangered habitat.***



FAIRCHILD TROPICAL BOTANIC GARDEN

## THE BIOLOGICAL IMPORTANCE OF PINE ROCKLAND HABITATS IN MIAMI-DADE COUNTY

Miami-Dade County's pine rocklands support 374 plant species. Thirty-one are found only in South Florida, five are listed as federally endangered, and another five are candidates for listing.



Many wildlife species depend on pine rockland habitat, including the endangered indigo snake, the atala butterfly, foxes, raccoons and many birds.



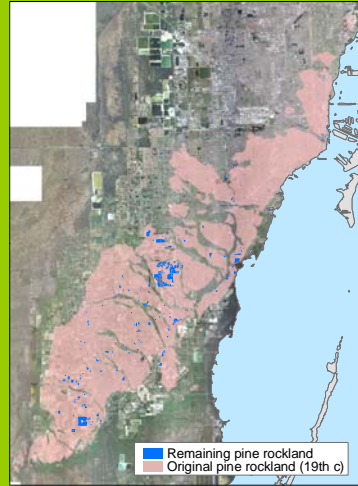
High biodiversity like that found in the pine rocklands provides us with many benefits:

- Ecosystem services such as fresh air, clean water, and productive soils
- Food, medicines and natural products
- Scenic beauty that enriches our lives
- A community of living things with which we share planet Earth, and the opportunity to practice thoughtful stewardship of the planet



## PINE ROCKLANDS – A DISAPPEARING RESOURCE

Because the pine rocklands are situated on higher ground, which is less prone to flooding, they tend to be developed first. These areas have shrunk dramatically over the years and now occur as isolated patches that cover only about 2% of their original extent.



Fragmenting habitats makes remaining plant populations more susceptible to disease and to extinction from hurricanes or vandalism. In Miami-Dade County, these isolated patches of pine rockland plants are separated by buildings, roads and agricultural fields. This makes it more difficult for birds, butterflies, mammals and the wind to disperse seeds and pollens necessary for plants to reproduce.

### Solutions to this problem include planting native species gardens

Some benefits of planting native species:

- Reduce costs of landscape installation and maintenance
- Create a landscape that will resist storm damage
- Lower water and pesticide usage
- Reduce health and safety risks
- Reduce air pollution and carbon footprint
- Improve water quality
- Restore and protect habitat
- Beautify the environment
- Create a natural environment for children

## PROTECTING SOUTH FLORIDA'S PINE ROCKLANDS

Joining Miami-Dade's County Natural Areas Management, the Environmentally Endangered Lands Program, and the Institute for Regional Conservation, Fairchild Tropical Botanic Garden is launching the **Connect to Protect Network** to promote wildlife corridors between pine rockland fragments.



These corridors will safeguard pollinator movement, seed dispersal and the genetic health of rare species, as well as help wildlife move safely between the remnant patches of pine rockland.

### WAYS YOU CAN HELP

- Plant pine rockland native species on your property. You can buy them at nurseries that carry native plants.
- Encourage teachers and students to create pine rockland gardens in their schools.
- If you have remnant pine rockland on your property, make a commitment to preserving and maintaining it in its native condition.
- Visit the accessible pine rockland fragments on public lands.
- Support efforts in Miami-Dade County to create wildlife corridors.